

Xerox® WorkCentre® 6655i

A4

Colour

Multifunction Printer



Xerox® WorkCentre® 6655i Colour Multifunction Printer

The way you want to work.



Xerox® WorkCentre® 6655i Colour Multifunction Printer

Work isn't always confined to the office and neither are you. Xerox® ConnectKey® Technology gives you the freedom and convenience to work when you want, where you want, by keeping you seamlessly connected to the productivity tools that drive your business forward. For more information, visit www.connectkey.com

Room to roam.

The WorkCentre 6655i allows your staff to control device functions from any workstation. The Remote Control Panel makes it more convenient to train users and for IT staff to remotely view and monitor the user interface.

Xerox® devices built on ConnectKey Technology support a Wi-Fi Direct connection that lets you print from your mobile device without having to connect to a network.

Xerox enables secure and accurate printing and scanning with a continuum of mobile options that fit your environment, with free print and scan apps, such as Xerox® Mobile Link App, plus a robust set of mobile enterprise solutions.

For more information, visit www.xerox.com/mobile

A better way to get work done.

Experience a simplified, and intuitive user interface that can be tailored for your individual business needs. Easily create a workflow that enables you to scan information to your selected destinations, (email, desktop, network folders, cloud repositories) in secure text searchable formats, at the touch of a button. This saves time, and allows more to be done with the information you scan and store.

Embedded apps allow you to easily connect your mobile workers to the device. Xerox App Gallery allows you to download new apps, such as Print from DropBox™ and Scan to Microsoft® Office 365 directly from the user interface. Xerox® ConnectKey Technology helps to streamline how your business deals with critical information – in-house or in the cloud.

For more information, visit www.xerox.com/AppGallery

Bottom-line benefits.

Xerox® print drivers based on Microsoft® Windows® give you the ability to save different settings per application, minimising the need to make changes and reducing the risk of potential errors. Xerox® ConnectKey Technology evolves with your needs by restricting usage and regulating colour printing. The User Permission control integrates with your internal authentication system, allowing you to prevent pre-determined or non-authenticated users from seeing specific features on the user interface.

No-compromise data protection.

ConnectKey Technology provides advanced features and technologies to help ensure your company's confidential information stays secure. Our standard security features include AES 256-bit hard disk encryption, McAfee® protection powered by Intel Security, image overwrite, secure print with timed deletion and emailing to external mail servers.

For more information, visit www.xerox.com/security



To learn more about ConnectKey Technology-enabled features, go to www.xerox.com/ConnectKeyEG



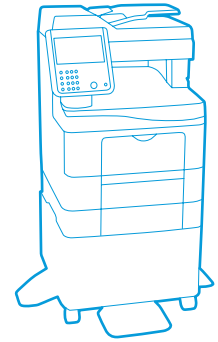
More flexibility regardless of location.

Improve your mobile printing experience.

- **Apple® AirPrint™**. Print email, photos and important office documents directly from your Apple iPhone® or iPad® with no drivers to install. With AirPrint, your iPhone or iPad automatically locates and connects to the AirPrint-enabled device over your office Wi-Fi network.
- **Xerox® Print Service Plug-in for Android™**. Android printing is simple without third-party apps or print drivers. This plug-in lets you easily print to a Xerox® ConnectKey Technology-enabled MFP through a wireless network.

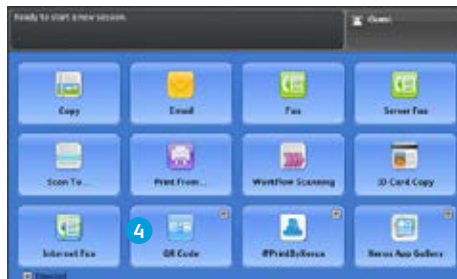
Xerox® Easy Translator Service

This optional service allows customers to scan a document and receive a translated print and/or email notification. Users can also send an image from an iOS or Android device, or a PC, that is forwarded for translation. For more information, visit <https://xeroxtranslates.com>



Whether on a desktop or floor-standing, the Xerox® WorkCentre® 6655i Colour Multifunction Printer offers the right configuration for any office environment.

3



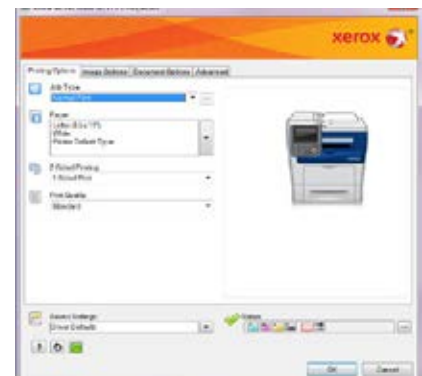
- 1 60-sheet Duplex Automatic Document Feeder accepts custom media sizes from 139.7 x 139.7 mm to 216 x 356 mm.
- 2 The large 216 x 356 mm platen glass supports a wide range of media sizes.
- 3 The WorkCentre 6655i includes a 7-inch touch screen with easily understood instructions and Help Screens to streamline walkup operations.
- 4 Standard apps for extra convenience. Xerox App Gallery, @PrintByXerox and QR Code help with mobile printing and pairing and loading new apps.
- 5 An easily accessible USB port allows users to quickly print from or scan to any standard USB memory device.
- 6 250-sheet output tray with tray-full sensor.
- 7 The Convenience Stapler staples up to 20 sheets of 75 g/m² media.
- 8 150-sheet Bypass Tray handles custom media sizes from 76.2 x 127 mm to 216 x 356 mm.
- 9 The standard 550-sheet paper tray handles media sizes from 148 x 210 mm to 216 x 356 mm.
- 10 Choose 1 additional 550-sheet paper tray for media sizes from 148 x 210 mm to 216 x 356 mm (optional), increasing the total paper capacity to 1,250 sheets.
- 11 Optional stand provides storage for toner cartridges, paper and other supplies.
- 12 The optional Xerox® USB Wireless Adapter allows you to connect the WorkCentre 6655i to your wireless network.

Keep your costs under control.

With the Xerox® WorkCentre® 6655i, you'll impact your bottom line – and impress your customers.

- **Customise your print driver settings for economy and efficiency.** For example, choose N-up for printing multiple pages on a single sheet as your default. Adjust settings for specific applications, such as always printing emails as duplex pages.
- **Print responsibly.** By default, our print driver is set to two-sided printing, and the Earth Smart feature allows you to select other default settings that encourage responsible usage, such as no printing banner pages.

- **Easy, accurate billing.** The WorkCentre 6655i has the ability to connect to the network to automatically submit meter readings so that toner replenishment can be streamlined to enable more productivity.
- **Manage and track device usage.** Xerox® Standard Accounting provides reports for greater cost control of all device functions. Advanced solutions from Xerox Alliance Partners deliver even more helpful tools for larger office environments.



The WorkCentre 6655i Colour Multifunction Printer is built on Xerox® ConnectKey® Technology. For more information, visit www.connectkey.com

Device Specifications		WorkCentre 6655i/X
Speed		Up to 35 ppm A4
Duty Cycle ¹		Up to 100,000 pages / month
Hard Drive / Processor / Memory		Minimum 250 GB HDD / 1 GHz Dual-core / 4 GB
Connectivity		10/100/1000Base-T Ethernet, High-Speed USB 2.0 direct print, Wi-Fi Direct with Optional Xerox® USB Wireless Adapter
Controller Features		Unified Address Book, Remote Control Panel, Online Support (accessed from the user interface and print driver), Configuration Cloning
Copy and Print		
Copy and Print Resolution		Copy: Up to 600 x 600 dpi; Print: Up to 2400 x 600 dpi
First-print-out Time (as fast as)		Copy: As fast as 16 seconds colour / 15 seconds black and white ; Print: As fast as 11 seconds colour / 11 seconds black and white
Page Description Languages		Adobe® PostScript® 3™, PDF, PCL® 5c / PCL 6, XML Paper Specification (XPS®)
Print Features		Print from USB, Encrypted Secure Print, Xerox® Earth Smart Driver Settings, Job Identification, Store and Recall Driver Settings, Bidirectional Real-time Status, Scaling, Job Monitoring, Xerox® Colour By Words, Application Defaults, Two-sided Printing (as default), Hold All Jobs
Mobile Printing and Apps	Standard	Apple® AirPrint™, Mopria Certified, QR Code App, Xerox App Gallery App, @PrintByXerox App
	Free Download	Xerox® Print Service Plug-in for Android, Mopria™ Print Service Plug-in for Android™, Xerox® Mobile Link App
	Optional	Xerox® Mobile Print, Xerox® Mobile Print Cloud, Xerox® Easy Translator Service
Scan	Standard	Destinations: Scan to Mailbox, Scan to USB, Scan to Email, Scan to Network; File Formats: PDF, PDF/A, XPS, JPEG, TIFF; Convenience Features: Scan to Home, Single Touch Scan, Searchable PDF, Single/Multi-Page PDF / XPS / TIFF, Encrypted / Password Protected PDF, Linearised PDF / PDF/A
	Optional	ConnectKey® for DocuShare®, Xerox® Scan to PC Desktop® SE and Professional
Fax		Embedded Fax ² , LAN Fax, Internet Fax, Server Fax
Security	Standard	McAfee® Embedded, McAfee ePolicy (ePO) Compatible, Hard Drive Image Overwrite, 256-bit Encryption (FIPS 140-2 compliant), Common Criteria Certification (ISO 15408) ³ , Encrypted Secure Print, Secure Fax, Secure Scan, Secure Email, Cisco® TrustSec Integration, Network Authentication, SSL, SNMPv3, Audit Log, Access Controls, User Permissions
	Optional	McAfee Integrity Control, Smart Card Kit (CAC/PIV, .NET), Xerox® PrintSafe Software
Accounting	Standard	Xerox® Standard Accounting (Copy, Print, Scan, Fax, Email), Network Accounting Enablement
	Optional	Equitrac Express®, Equitrac Office®, YSoft® SafeQ®
Paper Input	Standard	Duplex Automatic Document Feeder: 60 sheets; Custom sizes: 139.7 x 139.7 mm to 216 x 356 mm Bypass Tray: 150 sheets; Custom sizes: 76.2 x 127 mm to 216 x 356 mm Tray 1: 550 sheets; Custom sizes: 148 x 210 mm to 216 x 356 mm
	Optional	1 Additional Tray: 550 sheets; Custom sizes: 148 x 210 mm to 216 x 356 mm
Total Capacity (Std. / Max.)		700 / 1,250 sheets
Paper Output		250 sheets face down with tray full sensor
Finishing		Offline Convenience Stapler: 20-sheet, Single Position
Warranty		One-year on-site warranty ⁴

¹ Maximum volume capacity expected in any one month. Not expected to be sustained on a regular basis; ² Requires analogue phone line; ³ Undergoing evaluation; ⁴ Products purchased under a PagePack/eClick agreement do not carry a warranty. Please refer to your service agreement for full details of your enhanced service package.

Device Management

Xerox® CentreWare® Internet Services, Xerox® CentreWare® Web, Apple® Bonjour®, Low supplies email alerts

Print Drivers

Windows® XP/2003 Server/2008 Server/2012 Server/ Vista/7/8/9, Mac OS® 10.5 and higher, Oracle® Solaris 9, 10, Redhat® Enterprise Linux®, Fedora® Core 12-15, HP-UX® 11iv2, IBM® AIX® 5, SUSE®, Xerox® Global Print Driver®, Xerox® Mobile Express Driver®

Media Handling

Duplex Automatic Document Feeder: Simplex: 50 to 125 g/m²; Duplex: 60 to 125 g/m²; Bypass Tray, Tray 1 and Optional Tray: Simplex: 60 to 220 g/m²; Duplex: 60 to 163 g/m²

Media Types

Plain, Hole-punched, Letterhead, Lightweight Card Stock, Card Stock, Recycled, Bond, Labels, Pre-printed, Envelopes, Custom

For a complete list, visit www.xerox.com

Dimensions (W x D x H)

538 x 553 x 625 mm, Weight: 37.6 kg

Certifications

FCC Part 15, Class A, FCC Part 68, CE Mark applicable to Directives 2006/95/EC, 2004/108/EC and 1999/5/EC, UL 60950-1/CSA 60950-1-07, 2nd Edition, EAC, WEEE Directive 2002/96/EC and FDA/CDRH—Class 1 Laser Product, CE mark applicable Directive 2011/65/EC (RoHS), Blue Angel, GS Mark, NOM, Ukraine, Citrix, ENERGY STAR® qualified.

To view the latest list of certifications, go to

www.xerox.com/OfficeCertifications

What Comes in the Box

- WorkCentre 6655i Colour Multifunction Printer
- Starter Toner Cartridges – One of each (Cyan, Magenta, Yellow: 3,000 print capacity¹⁻³; Black: 6,000 print capacity¹⁻³)
- Quick Installation Guide, Product Information Guide, Driver CD, Documentation CD (User Manual, System Admin Guide)
- Power Cord
- Fax Cable

Supplies and Options

	Part No.
Black Toner Cartridge: 12,000 std. pages ¹	106R02747
Cyan Toner Cartridge: 7,500 std. pages ¹	106R02744
Magenta Toner Cartridge: 7,500 std. pages ¹	106R02745
Yellow Toner Cartridge: 7,500 std. pages ¹	106R02746
Imaging Unit Kit: Up to 60,000 pages ²	108R01121
Waste Cartridge: Up to 30,000 pages ²	108R01124
Fuser Assembly (220V): Up to 100,000 pages ²	115R00089
Transfer Unit Kit: Up to 100,000 pages ²	108R01122
Staple Cartridge	108R00823
550-sheet Feeder	097S04664
Stand	497K14670
Wireless Connectivity Kit	497K11500
McAfee Integrity Kit	320S00665
Common Access Card Enablement Kit	498K17546

¹ Average standard pages. Declared Yield in accordance with ISO/IEC 19798. Yield will vary based on image, area coverage and print mode

² Approximate pages. Declared yield based on an average job size of 3 A4-size pages. Yield will vary depending on job run length and media size and orientation.

³ PagePack models will have a higher starter yield.

For more information, visit us at www.xerox.com/office

